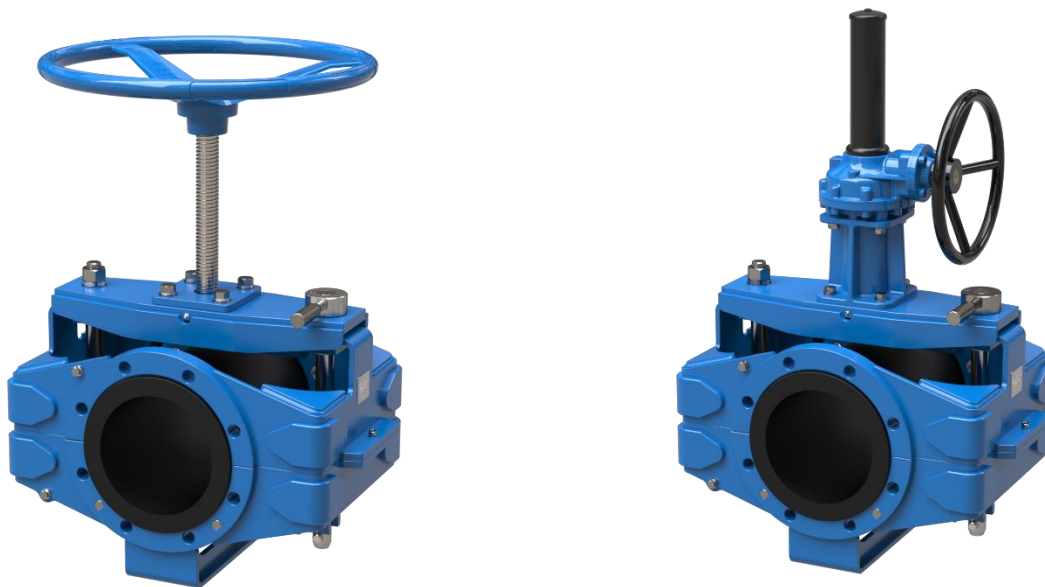


Direct mounted handwheel and with gearbox actuator



VALVE DIMENSIONS	WORKING PRESSURE (psi)						
	10	25	50	75	100	125	150
2"/50mm	MA	MA	MA	MA	MA	MA	MA
3"/80mm	MA	MA	MA	MA	MA	MA	MA
4"/100mm	MA	MA	MA	MA	MA	MA	MA
6"/150mm	MA	MA	MA	MA	MG	MG	MG
8"/200mm	MA	MG	MG	MG	MG	MG	MG
10"/250mm	MG	MG	MG	MG	MG	S/O	S/O
12"/300mm	MG	MG	MG	MG	MG	S/O	S/O

MA	DIRECT MOUNTED HANDWHEEL
MG	WITH GEARBOX
S/O	AVAILABLE ON DEMANDE ONLY, PLEASE CONTACT YOUR DISTRIBUTOR



Pneumatic actuator

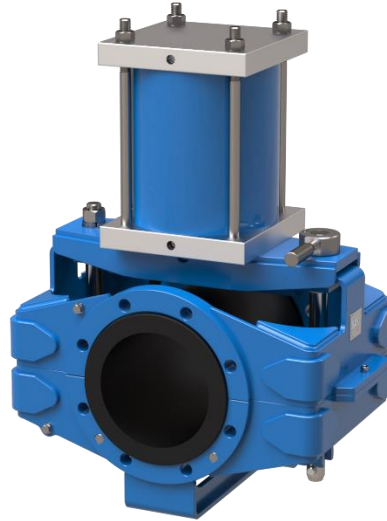


TABLE 2: RECOMMANDATIONS BASED ON WORKING PRESSURE AND WITH FACTORY AIR PRESSURE OF 80psi

VALVE DIMENSIONS	WORKING PRESSURE (psi)						
	10	25	50	75	100	125	150
2"/50mm	S	S	S	S	S	H	H
3"/80mm	S	S	S	S	S	H	H
4"/100mm	S	S	S	S	H	H	H
6"/150mm	S	S	S	H	H	H	X
8"/200mm	S	S	S	H	H	X	X
10"/250mm	S	S	S	H	X	S/O	S/O
12"/300mm	S	S	S	H	X	S/O	S/O

LEGEND:	S	PNEUMATIC ACTUATOR STANDARD DUTY
	H	PNEUMATIC ACTUATOR HEAVY DUTY
	X	PNEUMATIC ACTUATOR EXTRA HEAVY DUTY
	S/O	PLEASE CONTACT YOUR DISTRIBUTOR, ACTUATOR ON DEMANDE ONLY



Pneumatic actuator

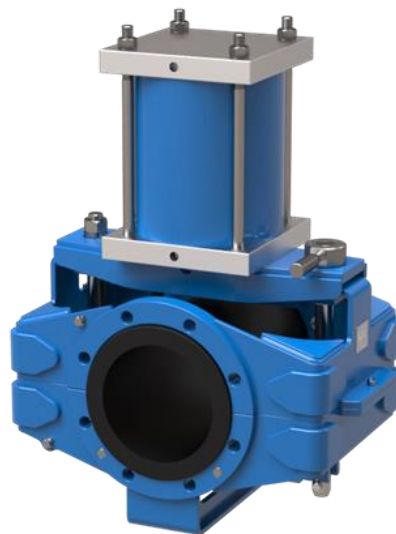


TABLE 3: RECOMMANDATIONS BASED ON WORKING PRESSURE AND WITH FACTORY AIR PRESSURE OF 60psi

VALVE DIMENSIONS	WORKING PRESSURE (psi)						
	10	25	50	75	100	125	150
2"/50mm	S	S	H	H	H	H	H
3"/80mm	S	S	H	H	H	H	X
4"/100mm	S	S	H	H	X	X	X
6"/150mm	H	H	H	X	X	X	X
8"/200mm	S	H	H	X	X	X	S/O
10"/250mm	S	S	H	X	X	S/O	S/O
12"/300mm	S	S	H	X	S/O	S/O	S/O

LEGEND:

S	PNEUMATIC ACTUATOR STANDARD DUTY
H	PNEUMATIC ACTUATOR HEAVY DUTY
X	PNEUMATIC ACTUATOR EXTRA HEAVY DUTY
S/O	PLEASE CONTACT YOUR DISTRIBUTOR, ACTUATOR ON DEMANDE ONLY

